



**HIS**  
CONSTRUCTORS, INC.



# STATEMENT OF QUALIFICATIONS



**ABILITY +  
DEPENDABILITY**  
ABILITY IS IMPORTANT DEPENDABILITY IS CRITICAL

5150 East 65th Street  
Suite B  
Indianapolis, IN 46220

T: 317.284.1195  
F: 317.284.1185  
hisconstructors.com



A grayscale photograph of a construction site. In the foreground, there are large piles of gravel or crushed stone. In the middle ground, several long, rectangular concrete beams are laid out on a construction bed. A crane is visible in the background, positioned over the beams. The sky is overcast. The text 'ABILITY + DEPENDABILITY' is overlaid in the center, with a green plus sign between the words. Below it, the text 'ABILITY IS IMPORTANT DEPENDABILITY IS CRITICAL' is also overlaid. A decorative graphic of green dots forms a partial arch over the text.

# ABILITY + DEPENDABILITY

ABILITY IS IMPORTANT DEPENDABILITY IS CRITICAL



# TABLE OF CONTENTS

<b>INTRODUCTION</b>	1
<b>MARKETS</b>	1
<b>GEOGRAPHICAL AREAS OF OPERATION</b>	1
<b>SERVICES</b>	1
<b>CUSTOMERS</b>	2
<b>INSURANCE</b>	3
<b>HEALTH AND SAFETY</b>	3
<b>APPENDICES</b>	
Appendix A: Project Experience	4
Appendix B: References	23
Appendix C: Insurance and Bonding	25
Appendix D: Resumés	28



# INTRODUCTION

HIS Constructors, Inc. (HIS) is a leading provider of environmental, civil, excavation and industrial construction services.

HIS Constructors, Inc. has performed a wide variety of projects, involving Superfund, TSCA, RCRA and brownfields sites, in addition to highway construction and property development sites.

## MARKETS

HIS performs projects for numerous manufacturing, engineering, consulting and government customers. The majority of HIS customers exist in the following markets:

- Automotive
- Petroleum
- Chemical
- Steel
- Utility
- Environmental Engineering
- Civil Engineering
- Government

## GEOGRAPHICAL AREAS OF OPERATION

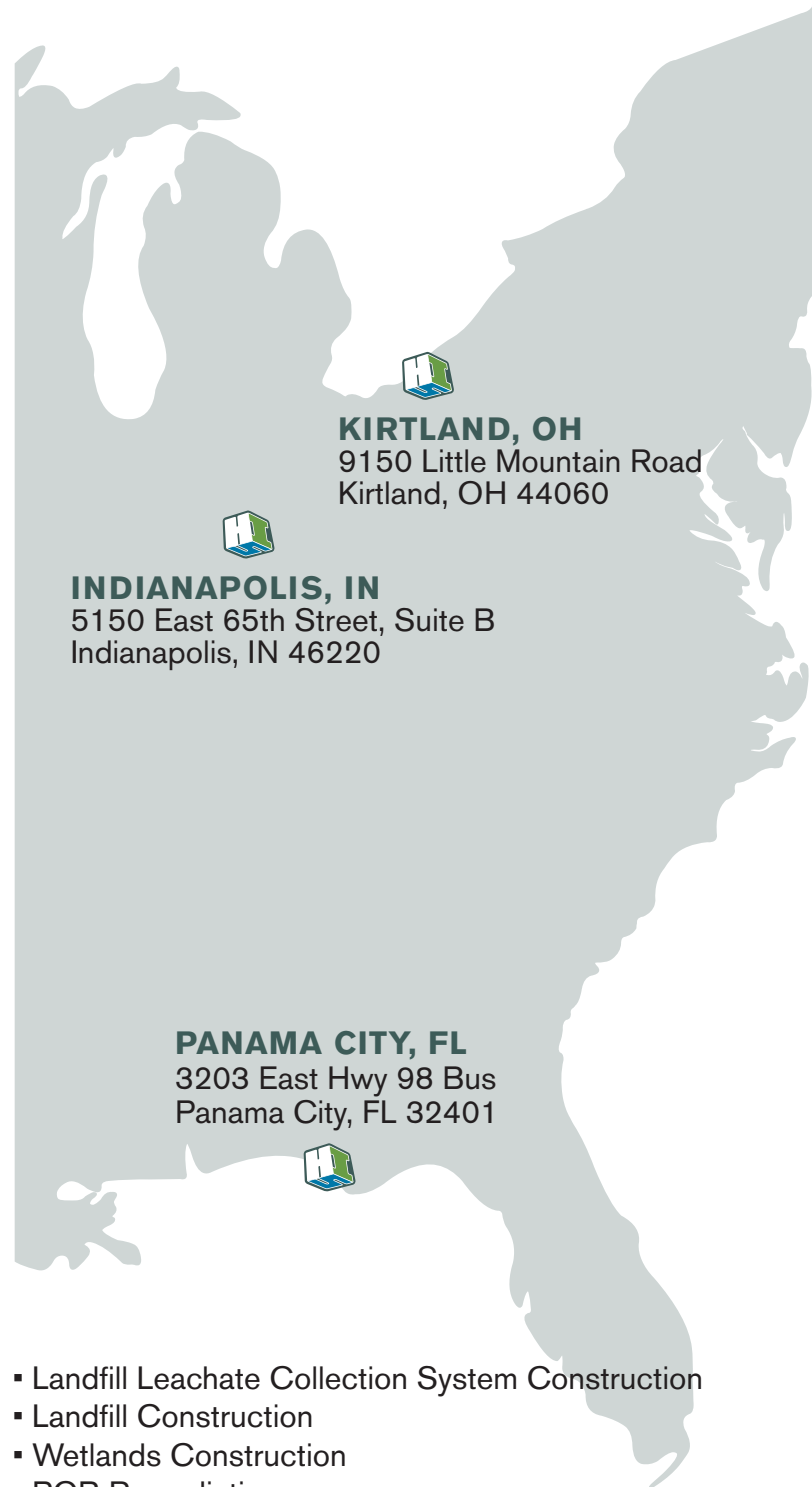
HIS is a nationwide contractor and performs work in all US states with the exception of Alaska and Hawaii. The HIS Indianapolis office serves as its base of operations, while also performing work from their satellite offices in Florida and Ohio.

## SERVICES

HIS provides a broad range of environmental remediation, construction and industrial services.

HIS performs projects ranging from a few thousand dollars to several million dollars in value. The following outlines HIS' primary services:

- Manufactured Gas Plant Remediation
- Metals Contaminated Soil Stabilization
- Soil Landfarming/Bioremediation
- Landfill Closure
- Landfill Cap Construction
- Landfill Gas Collection System Construction
- Dam Construction



### KIRTLAND, OH

9150 Little Mountain Road  
Kirtland, OH 44060

### INDIANAPOLIS, IN

5150 East 65th Street, Suite B  
Indianapolis, IN 46220

### PANAMA CITY, FL

3203 East Hwy 98 Bus  
Panama City, FL 32401

- Landfill Leachate Collection System Construction
- Landfill Construction
- Wetlands Construction
- PCB Remediation
- Groundwater Treatment System Construction
- Soil Vapor Extraction System Construction
- Underground Storage Tank Closure
- Hazardous Waste Disposal
- Contaminated Soil Excavation

- Tank/Vessel Cleaning
- Pit/Vault Cleaning
- Select Demolition
- Concrete Construction
- Sheet Piling Construction
- Site Work/Development
- Site Utilities

- Equipment Decommissioning
- Earthwork
- River/Stream Bank Reconstruction
- Hydro-excavation
- Bridge Construction

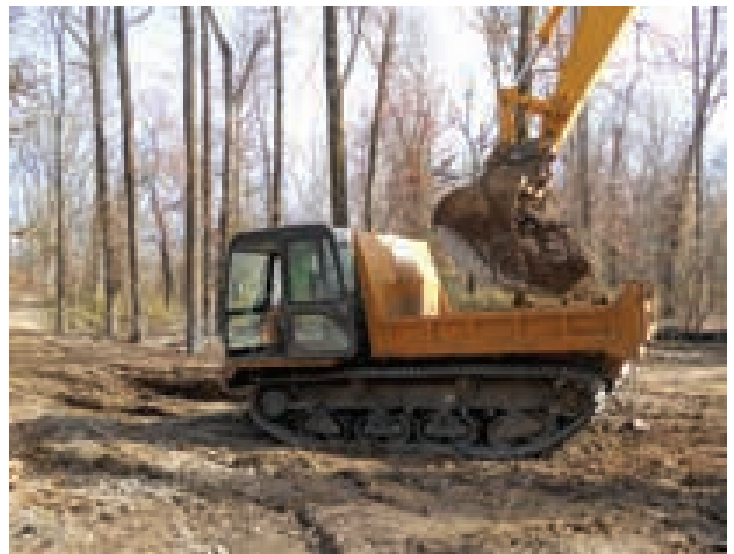
*A resume of HIS projects are detailed in Appendix A.*

## **CUSTOMERS**

One of the vital keys to a successful project is open communication between the client and the contractor. Creating successful partnerships with its customers is a major focus for HIS. HIS focuses on building successful partnerships which has resulted in repeat project opportunities with its clients.

*HIS' major clients include:*

- CH2M Hill
- URS Corporation
- Burns and McDonnell
- Mundell & Associates, Inc.
- Delta Environmental Consultants, Inc.
- Hull & Associates, Inc.
- Duke Energy
- SCANA
- Southern Union Company
- NiSource
- Entergy, Inc.
- Allied Waste
- Republic Services
- General Motors Company
- Ford Motor Company
- Firestone Industrial Products
- City of Indianapolis
- City of South Bend
- Indiana Department of Transportation
- Pennsylvania Department of Environmental Protection



*Customer references are located in Appendix B.*



# INTRODUCTION

## INSURANCE

HIS maintains insurance and bonding coverage (including Contractor's Pollution Liability and Professional Liability coverage) meeting or exceeding industry standards. *HIS insurance and bonding information is located in Appendix C.*

## HEALTH AND SAFETY

HIS Constructors, Inc. has developed a health and safety program that helps to maintain and enhance a "safety first" culture within the company. The foundation of the HIS safety program is the daily safety huddle. Each work day before a project begins, the site superintendent conducts a safety orientation. All HIS employees and subcontractors are required to attend. The day's specific safety hazards and solutions are discussed. Starting the day with safety helps to reinforce a safety mindset among all employees and subcontractors.

All HIS employees involved in hazardous waste operations are 40 hour HAZWOPPER trained with the appropriate 8 hour annual refresher. In addition, employees at the foreman level and up receive at a minimum: CPR/ first aid training, 8 Hour HAZ Supervisor training, ATSSA traffic control training, and competent person excavation and trenching. HIS also provides employees with other specialized training as needed. All employees in hazardous waste operations are enrolled in HIS' medical monitoring program.

HIS maintains a corporate health and safety manual that acts as a SOP for routine tasks encountered on HIS projects. Each project superintendent maintains a copy of the corporate health and safety manual in their pick-up. In addition, a site specific health and safety plan is written for each project to address specific hazards that could be encountered.



# APPENDIX A PROJECT EXPERIENCE



# APPENDIX A: PROJECT EXPERIENCE

Project Name	Location	Customer
Bridge Construction	Lafayette, IN	Crider & Crider, Inc.
Bridge Reconstruction	Bartholomew County, IN	INDOT
Structure Replacement	Owen County, IN	INDOT
Bridge Construction	Kokomo, IN	Crider & Crider, Inc.
Pedestrian Walkway Construction	Hamilton County, IN	INDOT
Sheeting & Wall Repair	96th Street, Indianapolis	Gradex, Inc.
Levee Repair	Edinburgh, IN	Indiana Dept of Natural Resources
Petroleum Contaminated Soil Excavation & Disposal	Kokomo, IN	E&B Paving, Inc.
Structure Replacement	St. Joseph County, IN	INDOT
Emergency Spill Clean Up	Hammond, IN	British Petroleum
Remediation System Expansion, Woods Products Superfund	Site Siren, WI	CH2M Hill Contractors, Inc.
Structure Replacement	Roanne, IN	INDOT
Petroleum Contaminated Soil Excavation & Disposal	Lafayette, IN	Crider & Crider, Inc.
Petroleum Contaminated Soil Excavation & Disposal	New Castle, IN	E & B Paving, Inc.
Chlorinated Solvent Contaminated Soil Excavation and Disposal	Indianapolis, IN	Mundell & Associates, Inc.
Petroleum Contaminated Soil Excavation & Disposal	West Lafayette, IN	Milestone Contractors, LP
Emergency Dam Repair	Avon, IN	Indiana Dept. of Natural Resources
Vault Removal	Rochester, IN	QEPI, Inc.
Petroleum Contaminated Soil Excavation & Disposal	Adams County, IN	Brooks Construction Company
Bridge Construction	Indianapolis, IN	Indianapolis Dept. of Public Works
Bridge Construction	Carmel, IN	City of Carmel
Manufactured Gas Plant Soil Excavation/Remediation	Martinsville, IN	Duke Energy



Project Name	Location	Customer
Manufactured Gas Plant Soil Excavation/Remediation	Huntington, IN	Duke Energy
Lead Contaminated Soil Excavation & Disposal	Shelbyville, IN	City of Shelbyville
Site Demolition, Soil Excavation & Disposal, Former Western Rubber	Goshen, IN	City of Goshen
PCB Contaminated Soil Removal & Disposal	St. Louis, MO	CBS Corporation
Silo Cleaning	Bardstown, KY	Pro Plastics Sales & Service, Inc.
Mine Waste Earthwork Management, Miama Ward, Tar Creek Superfund Site	Picher, OK	CH2M Hill
Bridge Deck Poly Overlay	Southport, IN	Reith-Riley Co., Inc.
Cleaning and Removal of Above Ground Storage Tanks	Lafayette, IN	Antea Group
Mass Excavation Indianapolis Convention Center Construction	Indianapolis, IN	Indiana Stadium & Convention Bldg Authority
Petroleum Contaminated Soil Excavation & Disposal	Lake County, IN	Walsh & Kelly Construction, Inc.
Bridge Rehabilitation	Fountain County, IN	INDOT
Structure Replacement	Benton County, IN	INDOT
Bridge Demolition & Construction,	I-465 Indianapolis, IN	Milestone Contractors, LP
Metals Contaminated Soil Excavation & Disposal	Goshen, IN	City of Goshen
Petroleum Contaminated Soil Excavation & Disposal	Indianapolis, IN	ARK Engineering Services, Inc.
Quarry Stripping/Mass Excavation	Ashkum, IL	Prairie Materials
UST Closure	Indianapolis, IN	Durham Engineering, Inc.
Manufactured Gas Plant Soil Excavation & Disposal	Goshen, IN	NIPSCO, Inc.
Rest Area Clean-Up	Greenfield, IN	INDOT



# APPENDIX A: PROJECT EXPERIENCE

Project Name	Location	Customer
Temporary Plant Erection	Richmond, IN	Prairie Materials
UST Closure & Petroleum Soil Excavation & Disposal	Kouts, IN	Grimmer Construction, Inc.
Rest Area Clean-Up	Greenfield, IN	INDOT
UST Closure Indiana Convention Center	Indianapolis, IN	Patriot Engineering, Inc.
UST Closure	Warsaw, IN	Grimmer Construction, Inc.
Quarry Stripping/Mass Excavation	Pontiac, IL	Prairie Materials, Inc.
Bridge Rehabilitation	Lafayette, IN	Tippecanoe Co. Board of Commissioners
Bridge Repair	Jennings County, IN	INDOT
UST Closure & Petroleum Soil Excavation & Disposal	Clinton County, IN	Rieth-Riley, Inc.
Petroleum Contaminated Soil Excavation & Disposal	Indianapolis, IN	ARK Engineering Services, Inc.
Tank Cleaning	Indianapolis, IN	AECOM
Petroleum Contaminated Soil Excavation & Disposal	Windfall, IN	ARK Engineering Services, Inc.
Building Demolition	Muncie, IN	Mundell & Associates
UST Closure & Petroleum Soil Excavation & Disposal	Muncie, IN	Mundell & Associates
Mine Waste Earthwork/Management Tar Creek Superfund Site	Pitcher, OK	CH2M Hill
Demolition and Chlorinated Solvent Excavation & Disposal	Greensburg, IN	Keramida Environmental
Demolition and Remediation of Former Plating Shop	Muncie, IN	Seabreeze Technologies, Inc.
PCB Pond Closures	Terre Haute, IN	Pfizer, Inc.
Petroleum Contaminated Soil Excavation & Disposal West	Lafayette, IN	Keramida Environmental

Project Name	Location	Customer
Bridge Construction	Tippecanoe County, IN	Crider & Crider, Inc.
Bridge Rehabilitation	Warren/Fountain County, IN	Indiana Department of Transportation
Bridge Construction	Tippecanoe County, IN	Tippecanoe County Board of Commissioners
Chlorinated Solvent Contaminated Soil Excavation and Disposal	Greensburg, IN	Keramida Environmental, Inc.
Mass Excavation - Indiana Convention Center	Indianapolis, IN	Indiana Stadium & Convention
Building Authority Utility Construction - Indiana Convention Center	Indianapolis, IN	Indiana Stadium and Convention
Building Authority Petroleum Contaminated Soil Excavation and Disposal	Lake County, IN	Walsh & Kelly Construction, Inc
Bridge Rehabilitation	Fountain County	INDOT
Structure Replacement	Benton County, IN	INDOT
Bridge Construction - I-465	Indianapolis, IN	Milestone Contractors, LP
Lead/Petroleum Contaminated Soil Excavation and Disposal	Goshen, IN	City of Goshen
Former Ace Rent-A-Car Contaminated Soil Removal	Indianapolis, IN	ARK Engineering Services, Inc
Quarry Stripping	Ashkum, IL	Prairie Materials
UST Closure - Indiana Convention Center	Indianapolis, IN	Durham Engineering, Inc
Manufactured Gas Plant Contaminated Soil Excavation and Disposal	Goshen, IN	NiSource, Inc
Temporary Plant Erection	Richmond, IN	Prairie Materials
UST Closure and Petroleum Contaminated Soil Excavation and Disposal	Kouts, IN	Grimmer Construction, Inc
Contaminated Soil Excavation and Disposal	Greenfield, IN	INDOT
UST Closure - Indiana Convention Center	Indianapolis, IN	Patriot Engineering, Inc



# APPENDIX A: PROJECT EXPERIENCE

Project Name	Location	Customer
UST Closure	Warsaw, IN	Grimmer Construction, Inc
Bridge Construction	Tippecanoe County, IN	Crider & Crider, Inc.
Bridge Rehabilitation	Warren/Fountain County, IN	Indiana Department of Transportation
Bridge Construction	Tippecanoe County, IN	Tippecanoe County Board of Commissioners
Chlorinated Solvent Contaminated Soil Excavation and Disposal	Greensburg, IN	Keramida Environmental, Inc.
Mass Excavation - Indiana Convention Center	Indianapolis, IN	Indiana Stadium & Convention
Building Authority Petroleum Contaminated Soil Excavation and Disposal	Hebron, IN	Walsh & Kelly, Inc.
Groundwater Treatment System Rehabilitation	Zionsville, IN	ECC Trust
Bridge Construction	Spencer County, IN	Crider & Crider, Inc.
Petroleum Contaminated Soil Excavation and Disposal	Warsaw, IN	Quality Environmental Professionals, Inc.
Thermal Resistance Treatment System Construction	Indianapolis, IN	AECOM
Petroleum Contaminated Soil Excavation and Disposal	Tipton County, IN	Indiana Department of Transportation
Petroleum Contaminated Soil Excavation and Disposal	Corruna, IN	Primco, Inc.
Earthwork Surface Impoundment Construction	Terre Haute, IN	Pfizer, Inc
Small Structure Demolition and Construction - Sugar Creek	Hamilton County, IN	Hamilton County Highway Department
Earthwork	Chanute AFB, IL	CH2M Hill Contractors, Inc
Bridge Construction	Howard County, IN	Indiana Department of Transportation
Fish Hatchery Dam Construction	Morgan County, IN	Morgan County Board of Commissioners

Project Name	Location	Customer
Utility Demolition and Construction	Indianapolis, IN	Indiana Stadium & Convention
Building Authority Earthen Dam Stabilization - Elkhart River	Elkhart, IN	Indianapolis Department of Public Works
Silo Cleaning	Frankfort, IN	Tech Group, Inc.
Bridge Construction	Shelby County, IN	Indiana Department of Transportation
Bridge Construction - Eagle Creek	Indianapolis, IN	Indiana Department of Transportation
Small Structure Rehabilitation	Bartholomew County, IN	Indiana Department of Transportation
Petroleum Contaminated Soil Excavation and Disposal	Indianapolis, IN	Walsh Construction, Inc
EFR Vacuum Event	Nashville, IN	Active Environmental, Inc.
Petroleum Contaminated Soil Excavation and Disposal	Elkhart, IN	Indiana Department of Transportation
Silo Cleaning	Anderson, IN	Proplastics Sales & Service, Inc.
Manufactured Gas Plant Contaminated Soil Excavation and Disposal	Elkhart, IN	NiSource, Inc.
Petroleum Contaminated Soil Excavation and Disposal	Vigo County, IN	Crider & Crider, Inc.
Manufactured Gas Plant Contaminated Soil Excavation and Disposal	Seymour, IN	Duke Energy of Indiana, Inc.
Spillway Rehabilitation - Prather Lake	Prather, IN	Indiana Department of Natural Resources
Petroleum Contaminated Soil Excavation and Disposal	Shelby County, IN	Calumet Civil Contractors, Inc.
Bridge Rehabilitation	Harrison County, IN	Indiana Department of Transportation
Bridge Rehabilitation	Vermillion County, IN	Indiana Department of Transportation



# APPENDIX A: PROJECT EXPERIENCE

Project Name	Location	Customer
Manufactured Gas Plant Contaminated Soil Excavation and Disposal	Wilson, NC	City of Wilson
Bridge Rehabilitation	Benton County, IN	Indiana Department of Transportation
Sheet Piling Construction	Tippecanoe County, IN	Tippecanoe County Board of Commissioners
Petroleum Contaminated Soil Excavation and Disposal	Covington, IN	Milestone Contractors, LP
Building Demolition	Greensburg, IN	Brooks Construction, Inc.
Plating Shop Demolition and Hazardous Waste Disposal	Muncie, IN	Seabreeze Technologies, Inc.
Petroleum Contaminated Soil Excavation and Disposal	Lake County, IN	Hull & Associates, Inc.
Earthwork and Soil Cap Construction	Chicago, IL	CH2M Hill Contractors, Inc
New Airport Concourse A016	Indianapolis, IN	Indianapolis Airport Authority
Contaminated Soil Excavation and Disposal	Kokomo, IN	Keramida Environmental
Dam Demolition/Removal	Indianapolis, IN	Indianapolis Department of Public Works
R-28651-A Petroleum Contaminated Soil Excavation and Disposal	Lake County, IN	Walsh & Kelly, Inc/INDOT
Belmont Waste Water Treatment Plant	Indianapolis, IN	Indianapolis Department of Public Works
R-28871-A Petroleum Contaminated Soil Excavation and Disposal	Speedway, IN	E&B Paving, Inc/INDOT
Lift Station Construction	Indianapolis, IN	Preserve @ Fall Creek HOA
Solar Drying System Construction	Carmel, IN	MK Betts Engineering, Inc

Project Name	Location	Customer
Petroleum Contaminated Soil Excavation and Disposal	Lake County, IN	Walsh & Kelly, Inc/INDOT
Bulk Fuel Storage and Dispensing Facility Construction	Indianapolis, IN	Indianapolis Airport Authority
Petroleum Contaminated Soil Excavation and Disposal	Dunkirk, IN	Brooks Construction, Inc
IAA Quick Turn Around Facility	Indianapolis, IN	Indianapolis Airport Authority
Storm Sewer Construction/ Petroleum Contaminated Soil Excavation and Disposal	Hammond, IN	Atlantic Ritchfield Company/BP
Petroleum Contaminated Soil Excavation and Disposal	Lafayette, IN	Quality Environmental Professionals, Inc.
Manufactured Gas Plant Contaminated Soil Excavation and Disposal	Kansas City, MO	Missouri Gas Energy
SVE System Trenching and Pipe Installation	Westport, IN	Groundwater Environmental Service, Inc
Wetlands Construction	Alexandria, IN	POET Design & Construction, Inc
Petroleum Contaminated Soil Excavation and Disposal	Sullivan County, IN	Quality Environmental Professionals, Inc.
Bridge Rehabilitation	Warren County, IN	Indiana Department of Transportation
Petroleum Contaminated Soil Excavation and Disposal	Indianapolis, IN	Quality Environmental Professionals, Inc.
INDOT Maintenance Facility	Indianapolis, IN	Indianapolis Department of Public Works
Bridge Rehabilitation	Parke County, IN	Indiana Department of Transportation
Manufactured Gas Plant Contaminated Soil Excavation and Disposal	Florence, SC	Scana Services



# APPENDIX A: PROJECT EXPERIENCE

Project Name	Location	Customer
Mass Excavation Lucas Oil Stadium	Indianapolis, IN	Indiana Stadium & Convention Authority
Manufactured Gas Plant Remediation	Raleigh, NC	SCANA
Petroleum Contaminated Soil Excavation and Disposal	Rochester, IN	Indiana Department of Transportation
Petroleum Contaminated Soil Excavation and Disposal	Crown Point, IN	Mundell & Associates, Inc.
Remediation System Repairs	Fort Wayne, IN	Groundwater & Environmental Services, Inc.
UST Closure	Yorktown, IN	E & B Paving, Inc.
Petroleum Contaminated Soil Excavation and Disposal	Muncie, IN	Erber & Milligan Construction, Inc.
Contaminated Concrete Removal and Disposal	Indianapolis, IN	Automotive Components, Inc.
Petroleum Contaminated Soil Excavation and Disposal	Shoals, IN	Indiana Department of Transportation
Petroleum Contamination Soil Excavation and Disposal	Lawrenceburg, IN	Crider & Crider, Inc.
Oil-Water Separator Removal	Indianapolis, IN	Crider & Crider, Inc.
Petroleum Contaminated Soil Excavation and Disposal	Indianapolis, IN	Groundwater & Environmental Services, Inc.
Petroleum Contaminated Soil Excavation	Fortville, IN	Indiana Department of Transportation
UST Closure	Noblesville, IN	ENSR



Project Name	Location	Customer
Structure Construction	Pensacola, FL	Escambia County
Lead Soil Remediation	Indianapolis, IN	Indianapolis Airport Authority
Petroleum Contaminated Soil Excavation and Disposal	Madison, IN	Indiana Department of Transportation
SVE System Construction	Noblesville, IN	ENSR
Petroleum Contaminated Soil Excavation and Disposal	Mobile, AL	Eastern Aviation Fuels, Inc.
Concrete Construction	Noblesville, IN	Firestone Industrial Products, Inc.
Vacuum Truck Services	Indianapolis, IN	ERM
Petroleum Contaminated Soil Excavation and Disposal	South Bend, IN	City of South Bend
SVE System Construction	Bloomington, IN	Delta Environmental Consultants, Inc.
Excavation	Indianapolis, IN	Barth Electric Company, Inc.
Vacuum Truck Services	Indianapolis, IN	ERM
Petroleum Contaminated Soil Excavation and Disposal	Disposal Gary, IN	Delta Environmental Consultants, Inc.
Petroleum Contaminated Soil Excavation and Disposal	Indianapolis, IN	Troy Risk, Inc.
UST Closure	Indianapolis, IN	Indianapolis Public School Corporation
UST Closure	Indianapolis, IN	Indianapolis Public School Corporation
SVE System Construction	Indianapolis, IN	Ark Engineering Services, Inc.
Small Structure Construction	Warren County, IN	Indiana Dept. of Transportation



# APPENDIX A: PROJECT EXPERIENCE

Project Name	Location	Customer
Petroleum Contaminated Soil Excavation and Disposal	Kendallville, IN	Brooks Construction Company, Inc.
Petroleum Contaminated Soil Excavation and Disposal	Indianapolis, IN	E & B Paving, Inc.
Petroleum Contaminated Soil Excavation and Disposal	Fortville, IN	Delta Environmental Consultants, Inc.
Culvert Construction/Berm Repairs	Buffalo Island, AR	Lee & Ryan Environmental Consulting, Inc.
Wetlands Mitigation	Muncie, IN	Indiana Dept. of Transportation
Silo Cleaning	Edinburg, IN	Lear Corporation
SVE System Construction	Kokomo, IN	Ark Engineering Services, Inc.
Hydro-excavation	Fishers, IN	American Consulting, Inc.
Concrete Disposal	Noblesville, IN	Firestone Industrial Products, Inc.
UST Closure	Crawfordsville, IN	Indiana Dept. of Transportation
Dewatering Pad Construction – Superfund Site	Kokomo, IN	CH2M Hill
Manufactured Gas Plant Remediation	Durham, NC	SCANA
Contaminated Soil Excavation and Disposal	Indianapolis, IN	ERM
Small Structure Construction	Hendricks County, IN	Indiana Dept. of Transportation

Project Name	Location	Customer
Small Structure Construction	Shelby County, IN	Indiana Dept. of Transportation
Petroleum Contaminated Soil Excavation and Disposal	Muncie, IN	Delta Environmental Consultants, Inc.
UST Closure	Lafayette, IN	Indiana Dept. of Transportation
Petroleum Contaminated Soil Excavation and Disposal	Indianapolis, IN	Delta Environmental Consultants, Inc.
Petroleum Contaminated Soil Excavation and Disposal	Mobile, AL	Eastern Aviation Fuels, Inc.
Landfill Closure – Superfund Site	Waukegan, IL	PRP Group
Interceptor Trench Construction	Urbana, IL	City of Urbana
UST Closure	Jay County, IN	Indiana Dept. of Transportation
UST Closure	Bloomington, IN	Crider & Crider, Inc.
SVE System Construction	Lowell, IN	Mundell & Associates, Inc.
Building Demolition	Indianapolis, IN	Bungee, Inc.
Site Work	Shelbyville, IN	Shelbyville Central School Corporation
Dam Repairs	Warsaw, IN	Indiana Dept. of Public Works
Hydraulic Unit Flushing	Noblesville, IN	Firestone Industrial Products, Inc.
Chemical Line Installation	Noblesville, IN	Firestone Industrial Products, Inc.



# APPENDIX A: PROJECT EXPERIENCE

Project Name	Location	Customer
Small Structure Construction	Howard County, IN	Indiana Dept. of Transportation
Ceiling Decontamination	Muncie, IN	Excide Technologies
Building Pad Construction	Indianapolis, IN	Indianapolis Airport Authority
Tank Cleaning	Indianapolis, IN	Trivett Contracting, Inc.
Tank Cleaning	Indianapolis, IN	Bunge, Inc.
Soil Remediation	Walton, IN	Mundell & Associates, Inc.
Hydro-excavation	Indianapolis, IN	Crider & Crider, Inc.
Oil/Water Separator Cleaning	Noblesville, IN	Firestone Industrial Products, Inc.
Dam Repairs	Bluffton, IN	Indiana Dept. of Public Works
Pipe Installation	Noblesville, IN	Firestone Industrial Products, Inc.
Demolition and Construction	Noblesville, IN	Firestone Industrial Products, Inc.
Vacuum Truck Services	Indianapolis, IN	General Motors Corporation
Tank Cleaning	Noblesville, IN	Firestone Industrial Products, Inc.
Soil Remediation	Indianapolis, IN	Mundell & Associates, Inc.
Vacuum Truck Services	Morristown, IN	Bunge, Inc.
Silo Cleaning	Frankfort, IN	Tech Group
Vacuum Truck Services	New Orleans, LA	Golf Group, Inc.
UST Closure	Miami County, IN	Indiana Dept. of Transportation
Soil Remediation	Indianapolis, IN	Mundell & Associates, Inc.

Project Name	Location	Customer
UST Closure	Tippecanoe County, IN	Indiana Dept. of Transportation
SVE System Construction	Indianapolis, IN	Mundell & Associates, Inc.
Manufactured Gas Plant Remediation	Durham, NC	SCANA
Vacuum Truck Services	Lafayette, IN	Active Environmental, Inc.
Concrete Repairs	Indianapolis, IN	General Motors Corporation
Small Structure Construction	Tippecanoe County, IN	Indiana Dept. of Transportation
Small Structure Construction	Miami County, IN	Indiana Dept. of Transportation
UST Closure	Warrick County, IN	Indiana Dept. of Transportation
Sparging System Construction	Indianapolis, IN	Mundell & Associates, Inc.
UST Closure	Indianapolis, IN	Reith Riley Construction Company
Tank Cleaning	Marion, IN	Civil & Environmental Consultants, Inc.
Pit Cleaning	Indianapolis, IN	Raytheon Technical Services, Inc.
Concrete Crushing	Lafayette, IN	Vulcan Materials, Inc.
Manufactured Gas Plant Remediation	Concord, NC	SCANA
Vacuum Truck Services	Indianapolis, IN	General Motors Corporation
Vacuum Truck Services	Indianapolis, IN	Crider & Crider, Inc.
Pipe Cleaning	Noblesville, IN	Firestone Industrial Products, Inc.
Manufactured Gas Plant Remediation	Sumter, SC	SCANA



# APPENDIX A: PROJECT EXPERIENCE

Project Name	Location	Customer
Plant Remediation	Jennings, LA	Entergy, Inc.
Tank Cleaning	Indianapolis, IN	General Motors Corporation
Landfill Cap Construction	Laketon, IN	Laketon Refinery Corporation
Wetlands Construction	Tipton, IN	Tipton County Commissioners
Manufactured Gas Plant Remediation	Portsmouth, VA	NiSource, Inc.
Soil Remediation	Merrillville, IN	Delta Environmental Consultants, Inc.
UST Closure	Indianapolis, IN	Indiana Dept. of Transportation
Soil Stabilization	Savanna, IL	Montgomery Watson-Harza
Landfill Closure	Bloomington, IN	Monroe County Solid
Waste Management District Landfill Closure	Worthington, IN	Republic Services, Inc.
Soil Remediation	Indianapolis, IN	Andrews Environmental Engineering, Inc.
UST Closure	Salem, IN	Crystal Flash Petroleum, Inc.
Soil Remediation	Rensselaer, IN	Mundell & Associates, Inc.
UST Closure	Indianapolis, IN	Mundell & Associates, Inc.
Landfill Closure	Wilder, KY	Newport Steel Corporation
Landfill Closure – Brownfields Site	South Bend, IN	City of South Bend
Waste Excavation and On-Site Closure	York, PA	Pennsylvania Dept. of Environmental Protection
Wetlands Treatment System	Greenfield, IN	Indiana Dept. of Transportation

Project Name	Location	Customer
Manufactured Gas Plant Remediation	Kansas City, MO	Southern Union Corporation
Soil Remediation	Greenfield, IN	Mundell & Associates, Inc.
Manufactured Gas Plant Remediation	Raleigh, NC	SCANA
Wetlands Construction	Clayton, IN	Mundell & Associates, Inc.
UST Closure	Indianapolis, IN	City of Indianapolis
Waste Excavation and River Bank Reconstruction	Indianapolis, IN	City of Indianapolis
Incinerator Ash Monofill Closure	Indianapolis, IN	City of Indianapolis
Tank Cleaning	Indianapolis, IN	Daimler Chrysler Corporation
Tank Cleaning	Indianapolis, IN	Daimler Chrysler Corporation
Concrete Floor Demolition	Indianapolis, IN	General Motors Corporation
Building Demolition	Indianapolis, IN	Republic Services, Inc.
Remediation and Site Work – Keystone Industrial Park – Brownfields Site	Indianapolis, IN	City of Indianapolis
Water Control Structure Construction	West Palm Beach, FL	URS Corporation
Tank Cleaning	Laketon, IN	Laketon Refinery Corporation
Wetlands Treatment System Construction	Adrian, MI	Lee Villa Park
Wastewater Treatment Plant Rehabilitation	Indianapolis, IN	General Motors Corporation



# APPENDIX A: PROJECT EXPERIENCE

Project Name	Location	Customer
Wastewater Treatment System Construction	Joliet, IL	Montgomery Watson-Harza
Concrete and Piling Construction	Danville, IL	CCL Manufacturing, Inc.
Incinerator Ash Monofill Closure	Indianapolis, IN	City of Indianapolis
Landfill Closure	Bellefontaine, OH	Allied Waste, Inc.
Soil Stabilization	Carteret, NJ	RMT, Inc.
Landfill Cell Construction	Adrian, MI	Allied Waste, Inc.
Ravine Remediation and Reconstruction	Memphis, TN	Conestoga Rovers & Associates, Inc.
Leachate Collection System Construction	Chicago, IL	Illinois EPA
Creek Remediation – Superfund Site	Crawfordsville, IN	Heritage Environmental Services, Inc.
Landfill Closures	Chanute AFB, IL	Montgomery Watson-Harza
Demolition of Underground Utilities and Structures	Indianapolis, IN	Marathon Oil Company
Landfill Closure	Byran, OH	Allied Waste, Inc.
Landfill Closure	Bucyrus, OH	Crawford County Commissioners
Construction – Superfund Site	Muncie, IN	Earth Tech
Manufactured Gas Plant Remediation	Raleigh, NC	SCANA
Landfill Closure – Superfund Site	Lafayette, IN	Tippecanoe Environmental Response Fund Board



Project Name	Location	Customer
Landfill Cell Construction	Roachdale, IN	Heritage Environmental Services, Inc.
Landfill Closure	Chicago, IL	Illinois EPA
Industrial Demolition	Louisville, KY	Ford Motor Company
Manufactured Gas Plant Remediation	Midwest	CONFIDENTIAL
Ronald Reagan Bridge	Avon, IN	INDOT
Various Lead Soil Projects	Tar Creek, OK	CH2M Hill, Inc.
Coke and Carbon Plant	Terre Haute, IN	City of Terre Haute
Levee Reconstruction	Indianapolis, IN	USACE Louisville Dist.
Various Dam Reconstruction Projects	Indiana	Department of Natural Resources
MGP Remediation	Bloomington, IL	Burns and McDonnell
OMC Remediation	Waukegan, IL	CH2M Hill
GE Soil and Site Prep	Lafayette, IN	GE
UST/Concrete Removal	Kokomo, IN	Chrysler/Shook
Lloyd's Dry Cleaners	Milwaukee, WI	Enviroforensics
Contaminated Soil Remediation and Removal	Metropolis, IL	Honeywell/CH2M Hill
Site Prep/Contamination Removal	Bloomington, IL	Hyatt Place/Shiel Sexton
Site Prep	Indianapolis	Ironworks Keystone at the Crossing/Shiel Sexton
Magnesium Contamination Removal	Midwest	Materion



# APPENDIX B

## REFERENCES



# APPENDIX B: REFERENCES

## **Bob Apple**

SCANA Services, Inc.  
3516 Spring Forest Road  
Raleigh, NC 27616  
Phone: 919.819.2748  
Email: rapple@scana.com

## **Chad Hobson**

Hunt Construction Group  
425 W. South Street  
Indianapolis, IN 46225  
Phone: 317.631-2947  
Email: chobson@huntconstructiongroup.com

## **Patrick Martin**

City of Terre Haute  
Chief Planner  
Bus: (812) 244-4903  
Bus Fax: (812) 234-3973  
Email: pat.martin@terrehaute.in.gov

## **Mike Swieca**

Burns & McDonnell  
210 South Clark Street, #2235  
Chicago, IL 60603  
Phone: 630-724-3237  
Email: mswieca@burnsmcd.com



# APPENDIX C

## INSURANCE & BONDING



**ABILITY + DEPENDABILITY**  
ABILITY IS IMPORTANT DEPENDABILITY IS CRITICAL



**CERTIFICATE OF LIABILITY INSURANCE**

DATE (MM/DD/YYYY)

1/13/2016

THIS CERTIFICATE IS ISSUED AS A MATTER OF INFORMATION ONLY AND CONFERS NO RIGHTS UPON THE CERTIFICATE HOLDER. THIS CERTIFICATE DOES NOT AFFIRMATIVELY OR NEGATIVELY AMEND, EXTEND OR ALTER THE COVERAGE AFFORDED BY THE POLICIES BELOW. THIS CERTIFICATE OF INSURANCE DOES NOT CONSTITUTE A CONTRACT BETWEEN THE ISSUING INSURER(S), AUTHORIZED REPRESENTATIVE OR PRODUCER, AND THE CERTIFICATE HOLDER.

**IMPORTANT:** If the certificate holder is an ADDITIONAL INSURED, the policy(ies) must be endorsed. If SUBROGATION IS WAIVED, subject to the terms and conditions of the policy, certain policies may require an endorsement. A statement on this certificate does not confer rights to the certificate holder in lieu of such endorsement(s).

<b>PRODUCER</b> Tobias Insurance Group An AssuredPartners Company P.O. Box 90380 Indianapolis, IN 46290-0380	<b>CONTACT NAME:</b> Nick Schafer <b>PHONE (A/C, No, Ext):</b> (317) 844-7759 <b>E-MAIL ADDRESS:</b>	<b>FAX (A/C, No):</b> (317) 815-6036	
	<b>INSURER(S) AFFORDING COVERAGE</b>		<b>NAIC #</b>
<b>INSURED</b>  HIS Constructors, Inc. and HIS Constructors, LLC 5150 East 65th Street, Suite B Indianapolis, IN 46220	<b>INSURER A :</b> Catlin Specialty Insurance Company		<b>15989</b>
	<b>INSURER B :</b>		
	<b>INSURER C :</b>		
	<b>INSURER D :</b>		
	<b>INSURER E :</b>		
	<b>INSURER F :</b>		

**COVERAGES**

**CERTIFICATE NUMBER:**

**REVISION NUMBER:**

THIS IS TO CERTIFY THAT THE POLICIES OF INSURANCE LISTED BELOW HAVE BEEN ISSUED TO THE INSURED NAMED ABOVE FOR THE POLICY PERIOD INDICATED. NOTWITHSTANDING ANY REQUIREMENT, TERM OR CONDITION OF ANY CONTRACT OR OTHER DOCUMENT WITH RESPECT TO WHICH THIS CERTIFICATE MAY BE ISSUED OR MAY PERTAIN, THE INSURANCE AFFORDED BY THE POLICIES DESCRIBED HEREIN IS SUBJECT TO ALL THE TERMS, EXCLUSIONS AND CONDITIONS OF SUCH POLICIES. LIMITS SHOWN MAY HAVE BEEN REDUCED BY PAID CLAIMS.

INSR LTR	TYPE OF INSURANCE	ADDL INSD	SUBR WVD	POLICY NUMBER	POLICY EFF (MM/DD/YYYY)	POLICY EXP (MM/DD/YYYY)	LIMITS
	<b>COMMERCIAL GENERAL LIABILITY</b> <input type="checkbox"/> CLAIMS-MADE <input type="checkbox"/> OCCUR  GEN'L AGGREGATE LIMIT APPLIES PER: <input type="checkbox"/> POLICY <input type="checkbox"/> PRO-JECT <input type="checkbox"/> LOC OTHER:						EACH OCCURRENCE \$ DAMAGE TO RENTED PREMISES (Ea occurrence) \$ MED EXP (Any one person) \$ PERSONAL & ADV INJURY \$ GENERAL AGGREGATE \$ PRODUCTS - COMP/OP AGG \$ \$
	<b>AUTOMOBILE LIABILITY</b> <input type="checkbox"/> ANY AUTO <input type="checkbox"/> ALL OWNED AUTOS <input type="checkbox"/> HIRED AUTOS <input type="checkbox"/> SCHEDULED AUTOS <input type="checkbox"/> NON-OWNED AUTOS						COMBINED SINGLE LIMIT (Ea accident) \$ BODILY INJURY (Per person) \$ BODILY INJURY (Per accident) \$ PROPERTY DAMAGE (Per accident) \$ \$
	<b>UMBRELLA LIAB</b> <input type="checkbox"/> OCCUR <b>EXCESS LIAB</b> <input type="checkbox"/> CLAIMS-MADE DED <input type="checkbox"/> RETENTION \$						EACH OCCURRENCE \$ AGGREGATE \$ \$ PER STATUTE <input type="checkbox"/> OTH-ER <input type="checkbox"/>
	<b>WORKERS COMPENSATION AND EMPLOYERS' LIABILITY</b> ANY PROPRIETOR/PARTNER/EXECUTIVE OFFICER/MEMBER EXCLUDED? <input type="checkbox"/> Y / N (Mandatory in NH) If yes, describe under DESCRIPTION OF OPERATIONS below						E.L. EACH ACCIDENT \$ E.L. DISEASE - EA EMPLOYEE \$ E.L. DISEASE - POLICY LIMIT \$
<b>A</b>	<b>Cont. Pollution</b>			<b>CPV2040840816</b>	<b>08/27/2015</b>	<b>08/27/2016</b>	<b>Ea Loss 5,000,000</b>

DESCRIPTION OF OPERATIONS / LOCATIONS / VEHICLES (ACORD 101, Additional Remarks Schedule, may be attached if more space is required)  
**The Contractors Pollution Liability Coverage includes Transportation Pollution Coverage.**  
**The Contractors Pollution Liability Coverage includes Transportation Pollution Coverage.**

**CERTIFICATE HOLDER**

**CANCELLATION**

HIS CONSTRUCTORS, INC. AND HIS CONSTRUCTORS, LLC 5150 E 65TH STREET, SUITE B INDIANAPOLIS, IN 46220-4817	SHOULD ANY OF THE ABOVE DESCRIBED POLICIES BE CANCELLED BEFORE THE EXPIRATION DATE THEREOF, NOTICE WILL BE DELIVERED IN ACCORDANCE WITH THE POLICY PROVISIONS.  AUTHORIZED REPRESENTATIVE 
--	---



# CERTIFICATE OF LIABILITY INSURANCE

DATE (MM/DD/YYYY)

1/15/2016

THIS CERTIFICATE IS ISSUED AS A MATTER OF INFORMATION ONLY AND CONFERS NO RIGHTS UPON THE CERTIFICATE HOLDER. THIS CERTIFICATE DOES NOT AFFIRMATIVELY OR NEGATIVELY AMEND, EXTEND OR ALTER THE COVERAGE AFFORDED BY THE POLICIES BELOW. THIS CERTIFICATE OF INSURANCE DOES NOT CONSTITUTE A CONTRACT BETWEEN THE ISSUING INSURER(S), AUTHORIZED REPRESENTATIVE OR PRODUCER, AND THE CERTIFICATE HOLDER.

IMPORTANT: If the certificate holder is an ADDITIONAL INSURED, the policy(ies) must be endorsed. If SUBROGATION IS WAIVED, subject to the terms and conditions of the policy, certain policies may require an endorsement. A statement on this certificate does not confer rights to the certificate holder in lieu of such endorsement(s).

<b>PRODUCER</b> <b>Tobias Insurance Group</b> <b>An AssuredPartners Company</b> <b>P.O. Box 90380</b> <b>Indianapolis, IN 46290-0380</b>	<b>CONTACT NAME:</b> Nick Schafer <b>PHONE (A/C, No, Ext):</b> (317) 844-7759 <b>FAX (A/C, No):</b> (317) 815-6036 <b>E-MAIL ADDRESS:</b>	
	<b>INSURER(S) AFFORDING COVERAGE</b>	<b>NAIC #</b>
	<b>INSURER A :</b> Zurich American Insurance Company	
<b>INSURED</b>  <b>HIS Constructors, Inc. HIS Constructors, LLC</b> <b>5150 East 65th Street, Suite B</b> <b>Indianapolis, IN 46220</b>	<b>INSURER B :</b> Arch Specialty Insurance Company	<b>21199</b>
	<b>INSURER C :</b>	
	<b>INSURER D :</b>	
	<b>INSURER E :</b>	
	<b>INSURER F :</b>	

<b>COVERAGES</b>	<b>CERTIFICATE NUMBER:</b>	<b>REVISION NUMBER:</b>
------------------	----------------------------	-------------------------

THIS IS TO CERTIFY THAT THE POLICIES OF INSURANCE LISTED BELOW HAVE BEEN ISSUED TO THE INSURED NAMED ABOVE FOR THE POLICY PERIOD INDICATED. NOTWITHSTANDING ANY REQUIREMENT, TERM OR CONDITION OF ANY CONTRACT OR OTHER DOCUMENT WITH RESPECT TO WHICH THIS CERTIFICATE MAY BE ISSUED OR MAY PERTAIN, THE INSURANCE AFFORDED BY THE POLICIES DESCRIBED HEREIN IS SUBJECT TO ALL THE TERMS, EXCLUSIONS AND CONDITIONS OF SUCH POLICIES. LIMITS SHOWN MAY HAVE BEEN REDUCED BY PAID CLAIMS.

INSR LTR	TYPE OF INSURANCE	ADDL INSD	SUBR WVD	POLICY NUMBER	POLICY EFF (MM/DD/YYYY)	POLICY EXP (MM/DD/YYYY)	LIMITS
A	<input checked="" type="checkbox"/> COMMERCIAL GENERAL LIABILITY <input type="checkbox"/> CLAIMS-MADE <input checked="" type="checkbox"/> OCCUR <input checked="" type="checkbox"/> Contractual GEN'L AGGREGATE LIMIT APPLIES PER: <input type="checkbox"/> POLICY <input checked="" type="checkbox"/> PRO-JECT <input type="checkbox"/> LOC OTHER:			GLO655234506	08/27/2015	08/27/2016	EACH OCCURRENCE \$ 1,000,000
							DAMAGE TO RENTED PREMISES (Ea occurrence) \$ 300,000
							MED EXP (Any one person) \$ 5,000
							PERSONAL & ADV INJURY \$ 1,000,000
							GENERAL AGGREGATE \$ 2,000,000
A	<input checked="" type="checkbox"/> AUTOMOBILE LIABILITY <input checked="" type="checkbox"/> ANY AUTO ALL OWNED AUTOS <input checked="" type="checkbox"/> HIRED AUTOS <input checked="" type="checkbox"/> SCHEDULED AUTOS NON-OWNED AUTOS			BAP655234606	08/27/2015	08/27/2016	COMBINED SINGLE LIMIT (Ea accident) \$ 1,000,000
							BODILY INJURY (Per person) \$
							BODILY INJURY (Per accident) \$
							PROPERTY DAMAGE (Per accident) \$
							\$
B	<input checked="" type="checkbox"/> UMBRELLA LIAB <input checked="" type="checkbox"/> OCCUR <input checked="" type="checkbox"/> EXCESS LIAB <input type="checkbox"/> CLAIMS-MADE DED RETENTION \$			ULP004033905	08/27/2015	08/27/2016	EACH OCCURRENCE \$ 5,000,000
							AGGREGATE \$ 5,000,000
							\$
A	<input checked="" type="checkbox"/> WORKERS COMPENSATION AND EMPLOYERS' LIABILITY <input type="checkbox"/> ANY PROPRIETOR/PARTNER/EXECUTIVE OFFICER/MEMBER EXCLUDED? (Mandatory in NH) If yes, describe under DESCRIPTION OF OPERATIONS below		Y / N N / A	WC655234806	08/27/2015	08/27/2016	<input checked="" type="checkbox"/> PER STATUTE <input type="checkbox"/> OTH-ER
							E.L. EACH ACCIDENT \$ 1,000,000
							E.L. DISEASE - EA EMPLOYEE \$ 1,000,000
							E.L. DISEASE - POLICY LIMIT \$ 1,000,000

DESCRIPTION OF OPERATIONS / LOCATIONS / VEHICLES (ACORD 101, Additional Remarks Schedule, may be attached if more space is required)  
AUTO LIABILITY COMP/COLL DED \$1000

## CERTIFICATE HOLDER

HIS CONSTRUCTORS, INC. AND HIS CONSTRUCTORS, LLC  
 5150 E. 65th STREET, SUITE B  
 INDIANAPOLIS, IN 46220

## CANCELLATION

SHOULD ANY OF THE ABOVE DESCRIBED POLICIES BE CANCELLED BEFORE THE EXPIRATION DATE THEREOF, NOTICE WILL BE DELIVERED IN ACCORDANCE WITH THE POLICY PROVISIONS.

AUTHORIZED REPRESENTATIVE  
*Nick Schafer*







# APPENDIX D

## RESUMÉS



# APPENDIX D: RESUMÉS

## Terry Morgan PRESIDENT

### EDUCATION AND TRAINING

University of Phoenix - *Phoenix, Arizona*  
Organizational Management

University of Indianapolis - *Indianapolis, Indiana*  
Master of Business Administration

Associated General Contractors of America,  
*Washington, D.C.*  
Advanced Management Program

### PROFESSIONAL & COMMUNITY AFFILIATIONS

- Indiana Constructors Inc. Board President 2015
- University of Indianapolis MBA Alumni Association
- University of Indianapolis Board of Directors
- Northwestern Schools of Shelby County Board of Trustees
- Indiana Constructors Inc. Board of Directors 1992-1998
- Indiana Constructors Inc. Board President 1997
- Greenwood Lodge #274 F. & A.M.
- Indiana Construction Association, Board of Directors 2010-Present
- Laborers Health & Welfare and Pension Funds, Trustee 1994-1999

### EMPLOYMENT HISTORY

**HIS Constructors, Inc., Indianapolis, Indiana**  
President, November 1997 to Present

HIS Constructors, Inc. is a full service general contractor serving highway/heavy, environmental and industrial construction markets. HIS specializes in excavation, bridge and concrete construction, site development, underground utility construction, environmental remediation, and industrial maintenance.

**Milestone Contractors, L.P., Indianapolis, Indiana**  
Senior Vice President, 1989 – 1997

As Senior Vice President of this \$200 million per year construction organization, responsibilities included day to day business management including safety, contract management, scheduling, finance, legal and human resources.

**Beaty Construction, Inc., Boggstown, Indiana**  
Vice President, 1978 – 1989

Beaty Construction is a medium-sized highway and heavy construction company specializing in bridge construction, sewer, excavation and deep foundation construction. Responsibilities included the total management function of specialized contracting services to the highway industries.

# Stephen Ahlersmeyer

## VICE PRESIDENT of ENGINEERING and ESTIMATING

### EDUCATION AND TRAINING

Purdue University - *West Lafayette, Indiana*  
Bachelor of Science in Civil Engineering, May 1976

### PROFESSIONAL AFFILIATIONS

- 40 Hour OSHA HAZWOPER Training
- 8 Hour Refresher Training
- ACI Concrete Grade
- AGCS Aggregate
- PCC Level 1
- PCC Level 2
- Professional Engineer, Indiana
- American Society of Civil Engineers
- Chi Epsilon Honorary Civil Engineering Fraternity

### EMPLOYMENT HISTORY

**HIS Constructors, Inc.,** *Indianapolis, Indiana*  
Vice President of Engineering and Estimating  
2011 - Present

Manager of Engineering and Estimating  
October 2009 - 2011

Manager Environmental Remediation Projects  
2004 - October 2009

**Smock Fansler Corporation,** *Indianapolis, Indiana*  
Project Manager  
2002 - 2003

**Walsh Construction Company of Illinois**  
*Indianapolis, Indiana*  
Quality Control Manager  
2001 - 2002

**Milestone Contractors, L.P.,** *Indianapolis, Indiana*  
Senior Estimator  
1988 - 2001

### KEY PROJECTS

- River Road & Westfield Boulevard over 465 (Sub to Milestone), North Vernon, IN – poly carb overlay
- County Road 300 North, Lafayette, IN
- State Road 33, Fort Wayne, IN – 3 sided box
- Fort Wayne, IN – pile driving for twin slab top
- Bridges over Gar Creek
- Highway 231, Spencer, IN – 3 sided box
- County Road 200 North over the new 31 by-pass – Kokomo, IN
- 96th Street Retaining Wall
- Interstate 65 and Southport poly-carb overlay
- Twin slab top bridges over Gar Creek on new 24 in Fort Wayne, Indiana
- New bridge construction over Little Raccoon Creek in Parke County, Indiana
- Construction of new 1.7-mile road and new 400 ft. bridge in Fairland, Indiana
- Construction of two new bridges and MSE wall in Lafayette, Indiana
- Bridge widening on State Road 25 in Lafayette, Indiana
- Wetlands construction in Hancock County, Indiana
- Steel pedestrian bridge and retaining wall construction in Kokomo, IN
- Two new box beam bridges over State Roads 58 and 62 over Eagle Creek in Boone County, Indiana
- Poly overlay over I-65 and Southport Road in Greenwood, Indiana



# APPENDIX D: RESUMÉS

## Charles “Brian” Keeney VICE PRESIDENT of OPERATIONS

### EXPERIENCE

- 22 years of construction project management experience
- 27 years of environmental experience
- 7 years of mine waste experience
- 17 years of government contract experience
- 10 years of MGP remediation experience

### CERTIFICATIONS / TRAINING

- First Aid/ CPR
- 30 Hour OSHA Construction Training
- University of Findlay Emergency Response Training
- USACE Construction Quality Management for Contractors Certificate
- 40 Hour OSHA HAZWOPER Training
- 8 Hour HAZWOPER Supervisor
- 8 Hour Refresher Training
- Competent Person Training for Excavation and Trenching
- Confined Space and Rescue Training

### EMPLOYMENT HISTORY

#### **HIS Constructors, Inc., Indianapolis, Indiana**

Vice President of Operations

2010 - Present

Vice President of Risk Management

2007 - 2010

Project Manager

2000 - 2006

### KEY PROJECTS

**Project Manager, MGP Site Clean-up, North Carolina** Project Manager on the remediation of contaminate soil in North Carolina. About 10,000 tons of contaminated soil was removed and disposed of. In addition, several large underground storage tanks were found that also had to be removed. HIS also had to handle contaminated ground water and disposal.

**Project Manager, Landfill Closure, Lafayette, IN** Project Manager for the construction of an \$8.5 million Superfund landfill closure project. Project involved placing approximately 275,000 cys of structural fill, 275,000 cys of select clay, and 50,000 cys of topsoil. Project included a leachate collection and management system, installation of leachate wells, an active gas collection system and a groundwater monitoring system.

**Project Manager, Landfill Closure, Rantoul, IL** Project Manager for the construction of landfill closures on 4 sites at the Chanute AFB in Rantoul, Illinois valued at approximately \$4.0 million. Each landfill closure consisted of debris removal, installation of a clay cover, rooting zone, topsoil placement and construction of a leachate collection system.

**Project Manager, Lead Contaminated Soil, Savanna, IL** Project Manager for the demolition, excavation and disposal of 20 PCB contaminated concrete underground vaults; construction of sprung structure; stabilization of 6,300 cubic yards of lead contaminated soil; loading and offsite disposal of 14,000 cubic yards of special waste soil.

**Project Manager, Quarry Stripping and Stockpiling, Prairie Materials, Pontiac, IL** Site work included the stripping and stockpiling of 500,025 cy of overburden at the Prairie Materials quarry located in Pontiac, IL. Excavation depth was 35' over a 15-acre portion of the quarry. HIS performed dewatering and grading as the excavation progressed.

**Project Manager, Quarry Stripping and Stockpiling, Prairie Materials, Ashkum, IL** Site work included the stripping and stockpiling of 120,832 cy of overburden at the Prairie Materials

quarry located in Pontiac, IL. Excavation depth was 35' over a 15-acre portion of the quarry. HIS performed dewatering and grading as the excavation progressed.

**Project Manager, Quarry Stripping and Stockpiling, Prairie Materials, Ashkum, IL** Site work included the stripping and stockpiling of 120,832 cy of overburden at the Prairie Materials quarry located in Pontiac, IL. Excavation depth was 25' over a 10acre portion of the quarry. HIS performed dewatering and grading as the excavation progressed.

**Project Manager, Remediation and Site Development – Keystone Enterprises Industrial Park (Brownfield Site), City of Indianapolis, Indianapolis, IN** Scope of work entailed demolition of 500 LF of 48-in. and abandonment of 1,130 LF of storm sewer, demolition of 500 LF of 54-in. and abandonment of 690 LF of sanitary sewer, construction of 472 LF of 60-in. RCP storm sewer, excavation and relocation of 17,000 CY of metals contaminated soil, construction of clay cap, construction of water main system and plantings.



# APPENDIX D: RESUMÉS

## Jay Geise

### VICE PRESIDENT of ENVIRONMENTAL ESTIMATING

#### EDUCATION

Purdue University - *West Lafayette, Indiana*  
Bachelor of Science in Construction Management,  
1994

#### EDUCATION

- 20 years of construction project management experience
- 20 years of environmental/hazardous management experience
- 20 years of government contract experience
- 15 years of MGP remediation experience

#### CERTIFICATIONS / TRAINING

- 40 Hour OSHA HAZWOPER Training
- 8 Hour Refresher Training
- Competent Person Training for Excavation and Trenching

#### EMPLOYMENT HISTORY

##### **HIS Constructors, Inc., Indianapolis, Indiana**

Vice President Environmental Estimating  
2012 - Present

Senior Estimator/Project Manager  
2004 – 2012

Estimator  
2000 - 2004

#### KEY PROJECTS

##### **Estimator, Former Manufactured Gas Plant Closure, South Bend, IN**

HIS removed and disposed of 20,000 tons of coal tar waste located adjacent to an 18" high pressure natural gas main. HIS also backfilled the excavation and finished grade stone in preparation for asphalt pavement.

##### **Estimator, Former Manufacturing Gas Plant Closure, Huntington, IN**

HIS removed and disposed of 30,000 tons of coal tar waste and

building remnants located over a storm sewer culvert made of hand-placed limestone blocks. Project also entailed treating and disposing of nearly 2 million gallons of water.

##### **Estimator, PCB Pond Closure, Terre Haute,**

**IN** HIS removed and transferred 20,000 cubic yards of PCB contaminated soil within a series of former waste water treatment ponds. In addition, HIS constructed a clay cap over a 36-acre area and restore nearly 50 acres with topsoil and seed. On-site HIS personnel conducted environmental monitoring in working with PCB's, hydrogen sulfide, methane and dust.

##### **Estimator, Waste Water Treatment Plant Pond Closures, Phase II, Terre Haute, IN**

HIS excavated 150,000 cubic yards of native soils to fill holding ponds, demolition of bunkers and buildings, hauling and restoring 50-acre site with topsoil and seed.

##### **Estimator, Paxton Landfill, Illinois**

HIS constructed a \$4.0 million leachate collection system that included 7,000 lft. of ductile iron force main, two lift stations, and a gravity collection system.

##### **Estimator, Manufactured Gas Plant-**

Midwest – Private Client for Burns & McDonnell. Phase one of the project consisted of removing contaminated material from an old Manufactured Gas Plant (MGP) site. Contaminated material was removed from 8 relief holders during all three phases. Various other structures and obstructions above and below ground were also decontaminated and removed. Approximately 363,000 tons of contaminated material was removed and the area backfilled to preexisting grade. Excavation activities occurred around active power structures and near a historical building requiring coordinated work efforts to protect the structural integrity of each. As the contaminated

material was removed around one particular tower the material was excavated in strips and the cavity was backfilled within the same day with pumpable grout. The deepest excavation was well below the water table, under winter conditions and required all workers to don level B personal protective equipment. Misting stations utilized odor and emission reducing foam extensively. The project required the installation of a retaining wall around the entire perimeter and continual site security measures. In some areas of the site contaminated soil removal was not required and in Situ soil stabilization activities were performed. Containment walls were constructed to prevent stabilization materials from migrating off site. As the mixture was prepared for use it was then transported to the various site locations for mixing. In phase two a casing was required for installation across a main thoroughfare adjacent to the site and near a major league baseball park. Under heavy traffic constraints complicated by the regular schedule of baseball games, HIS personnel removed the contaminated material and an underground obstruction, placed the casing, backfilled the area and repaved the roadway under budget and ahead of project schedule. Over 4,000,000 gallons of water were pumped and transported off site for treatment.

**Estimator, Manufactured Gas Plant, City of Terre Haute, Indiana** HIS Constructors, Inc. was selected by the City of Terre Haute, Indiana to perform a MGP site remediation within their city limits. The project included the preparation and implementation of a Storm Water Protection Plan (SWPP). Tree clearing and erosion control were performed to prepare the site for remediation. Over 135,000 tons of impacted soil were excavated and transported to a landfill. It was necessary to demolish numerous underground structures, including stack foundation, tunnels, concrete pads, pits, tanks and piping. Backfilling was

performed along with storm water grading and the installation of manholes and RCP piping was also included in the scope of work. In Situ Stabilization (ISS) was performed by a HIS Subcontractor. 6,500 hundred yards of soil was successfully stabilized meeting the engineer's standards. A bituminous trail way will be installed in the spring of 2014.





# APPENDIX D: RESUMÉS

## TJ Morgan VICE PRESIDENT

### EDUCATION AND TRAINING

Indiana University, - *Indianapolis, Indiana*  
MBA, July 2009

Purdue University - *West Lafayette, Indiana*  
Bachelor of Management Science, May 2000

### PROFESSIONAL AFFILIATIONS

- Indiana Construction Association
- Build Indiana Council
- Cystic Fibrosis Foundation of Indianapolis
- Missions of Hope Missionary Team to Africa

### CERTIFICATIONS / TRAINING

- 10 Hour OSHA Construction Training
- 40 Hour OSHA HAZWOPER Training
- 8 Hour Refresher Training

### EMPLOYMENT HISTORY

**HIS Constructors, Inc.**, *Indianapolis, Indiana*  
Vice President  
2009 - Present

**Keter Plastics, Ltd.**, *Herzliya, Israel*  
Project Manager / Marketing Manager  
2006 - 2009

**MeadWestvaco**, *Indianapolis, Indiana*  
Account Manager  
2003 - 2006

**Heritage Industrial Services, LLC**, *Indianapolis, Indiana*  
Human Resources Coordinator  
2000 - 2003



# Jeff D. McKinney

## GENERAL SUPERINTENDENT

### EXPERIENCE

- 35 years of construction project management experience
- 20 years of environmental management experience
- 35 years of concrete structure experience
- 20 years of government contract experience

### CERTIFICATIONS / TRAINING

- TBI Supervisor
- AGC Supervisor
- 8 Hour HAZWOPER Supervisor
- 40 Hour OSHA HAZWOPER Training
- 8 Hour Refresher Training
- 10 Hour OSHA Construction Training
- 30 Hour OSHA Construction Training
- Competent Person Training for Excavation and Trenching
- Scaffolding Training
- First Aid/ CPR
- ATSSA Traffic Control Supervisor Training
- ATSSA Traffic Control Technician Training
- Trench and Excavation Safety
- Confined Space Entry & Rescue
- North American Crane Bureau, Inc. (Crane & Rigging Safety)
- First Aid / CPR
- BEC Leadership Training Program
- Safety Management Group Training – Qualified Signal & Qualified Rigger Person Training

### WORK EXPERIENCE

#### **HIS Constructors, Inc.**, *Indianapolis, Indiana*

General Superintendent

January 2016 - Present

Superintendent

April 2010 - January 2015

#### **Bowen Engineering**, *Indianapolis, Indiana*

Superintendent / Area Superintendent

March 1997 – December 2009

### WORK EXPERIENCE

- River Road & Westfield Boulevard over 465 (Sub to Milestone), North Vernon, IN – poly carb overlay
- County Road 300 North, Lafayette, IN
- State Road 33, Fort Wayne, IN – 3 sided box
- Fort Wayne, IN – pile driving for twin slab top
- Bridges over Gar Creek
- Highway 231, Spencer, IN – 3 sided box
- County Road 200 North over the new 31 by-pass – Kokomo, IN
- 96th Street Retaining Wall
- Interstate 65 and Southport poly-carb overlay
- Twin slab top bridges over Gar Creek on new 24 in Fort Wayne, Indiana
- Evansville Slip-lining Project
- Fall Creek WTP Chemical Conversion
- Belmont WWTP
- Lafayette WWTP
- Broad Ripple Flood Wall Project
- Petersburg Power Plant Project
- Waterford, Ohio Power Plant Project
- Third Site Trust HAZWOPER Project
- White River North New Lagoon
- Indianapolis Airport Tunnel Shafts
- Meadow Lake Wind Farm



# APPENDIX D: RESUMÉS

## Courtney J. Myers PROJECT MANAGER

### EDUCATION

Purdue University - *West Lafayette, Indiana*  
Agricultural and Biological Engineering, 2008

### CERTIFICATIONS / TRAINING

- 40 Hour OSHA HAZWOPER Training
- 8 Hour Refresher Training
- 10 Hour OSHA Construction Training
- First Aid/ CPR
- ATSSA Traffic Control Supervisor Training
- ATSSA Traffic Control Technician Training

### PROFESSIONAL AFFILIATIONS

- Board Member White River Alliance
- Indiana Construction Association

### EMPLOYMENT HISTORY

#### **HIS Constructors, Inc.,** *Indianapolis, Indiana*

Project Manager

March 2015 - Present

Estimator/Project Manager

July 2011 - February 2015

Field Project Manager

May 2010 - June 2011

Assistant Estimator

June 2008 - April 2010

### KEY PROJECTS

- INDOT Ronald Reagan Parkway Bridge over CSX railroad yard in Avon, Indiana
- Boone County 57 & 58 Bridge Replacements – Project Manager
- DPW Baker Road Small Structure Replacement
- City of Carmel Bridge Replacement in Carmel, Indiana
- DNR Cherry Lake Dam Repair in Indianapolis, Indiana
- DPW Lakeside Drive Bridge Rehab and Overlay in Indianapolis, Indiana

- DPW 42nd Street Bridge Rehab and Overlay in Indianapolis, Indiana
- INDOT Howard County New Bridge Construction – Project Manager
- USACE White River Levee Flood Reduction in Indianapolis, Indiana
- Steel Dynamics, Pittsboro Rolling Mill Expansion Earthwork in Pittsboro, Indiana
- Ironworks Building Earthwork and Site Utilities in Carmel, Indiana
- City of Wanamaker Contaminated Soil Removal
- Citizens Energy – Kinetrex LNG South Site Earthwork in Beech Grove, Indiana
- INDOT Wayne County Bridge Approach Replacement
- INDOT Parke County Bridge Replacement
- INDOT Marion County Slopewall Repairs

# Scott Beyer

## PROJECT MANAGER

### EDUCATION

Purdue University - *West Lafayette, Indiana*  
Bachelor of Science in Mechanical Engineering  
Technology, June 2008

- 600 W over Raccoon Creek Bridge Replacement – Montezuma, Indiana
- Slopewall Reconstruction – Indianapolis, Indiana
- I-70 Approach Replacement – Richmond, Indiana

### CERTIFICATIONS / TRAINING

- 40 Hour OSHA HAZWOPER Training
- 8 Hour Refresher Training
- 10 Hour OSHA Construction Training
- Competent Person Training for Excavation and Trenching
- First Aid/ CPR
- ATSSA Traffic Control Supervisor Training
- ATSSA Traffic Control Technician Training

### PROFESSIONAL AFFILIATIONS

- Indiana Construction Association

### EMPLOYMENT HISTORY

**HIS Constructors., Inc**, *Indianapolis, Indiana*

Project Manager  
January 2014 - Present

Operations Assistant / Equipment Coordinator  
July 2011 - January 2014

Estimating Assistant  
February 2010 - July 2011

**Tuscon Corporation**, *Chicago, Illinois*

Mechanical Engineer  
2008 - 2009

### KEY PROJECTS

- Lafayette Road Bridge Replacement over Eagle Creek – Indianapolis, Indiana
- Sheet Pile Retaining Wall Construction – Lafayette, Indiana
- I-70 over Sugar Creek Bridge Rehab – Terre Haute, Indiana
- I-70 over Clear Creek Bridge Rehab – Terre Haute, Indiana



# APPENDIX D: RESUMÉS

## Thomas “Tommy” Blair

### CORPORATE HEALTH AND SAFETY MANAGER, CORPORATE QA/QC MANAGER

#### EXPERIENCE

- 19 years of project management experience
- 14 years of safety management experience
- 3 years of QA/QC management experience

#### CERTIFICATIONS / TRAINING

- 8 Hour HAZWOPER Supervisor
- 40 Hour OSHA HAZWOPER Training
- 8 Hour Refresher Training
- 10 Hour OSHA Construction Training
- 30 Hour OSHA Construction Training
- Competent Person Training for Excavation and Trenching
- Scaffolding Training
- First Aid/ CPR
- Accident Analysis
- Applied Professional Ethics
- Army Corps of Engineers QA/QC
- Certified HAZWOPER Trainer
- Certified Incident Commander
- Confined Space Entry/Rescue
- Injury Prevention Certification
- Level III Safety & Health in Construction Certification

#### PROFESSIONAL AFFILIATIONS

- ICI Leadership Development Committee
- National Association of Safety Professionals
- Habitat for Humanity
- Indiana Construction Association

#### EMPLOYMENT HISTORY

**HIS Constructors, Inc.**, *Indianapolis, Indiana*  
Corporate Health and Safety Manager/  
QA-QC Manager  
January 2015 - Present

#### **Burgess Mechanical Corporation**

Vice President and Safety Director  
January 2012 - December 2014

#### **Top2Bottom, LLC**

Owner  
January 2007 - December 2011

#### **Holland Bates, Inc.**

Director of Operations and Safety Director  
May 1997 - December 2006

# Dan Clingan

## SENIOR PROJECT MANAGER

### EDUCATION

Indiana University - *Bloomington, Indiana*  
B.S. in Business Finance, 1977

### EXPERIENCE

- 38 years of project management experience
- 35 years of environmental experience
- 7 years of mine waste experience
- 35 years of government contract experience
- 15 years of MGP remediation experience

### CERTIFICATIONS / TRAINING

- 10 Hour OSHA Construction Training
- 40 Hour OSHA HAZWOPER Training
- 8 Hour HAZWOPER Supervisor
- 8 Hour Refresher Training
- Competent Person Training for Excavation and Trenching
- Confined Space and Rescue Training
- Crisis Management - How to Deal with the Media
- Equipment Utilization Management, Falls Management, 1989
- HAZWOPER First Responder Level I and II
- ICS 100, 200, 300, 700, and 800 Training

### EMPLOYMENT HISTORY

**HIS Constructors, Inc., Indianapolis, Indiana**  
Senior Project Manager  
August 2012 - Present

**Lata-Kemron Remediation, LLC, Westerville, Ohio**  
Project Manager  
April 2010 - March 2012

### KEY PROJECTS

**Project Manager, Manufactured Gas Plant-**  
Midwest Phase one of the project consisted of removing contaminated material from an old Manufactured Gas Plant (MGP) site. Contaminated material was removed from 8 relief holders during

all three phases. Various other structures and obstructions above and below ground were also decontaminated and removed. Approximately 363,000 tons of contaminated material was removed and the area backfilled to preexisting grade. Excavation activities occurred around active power structures and near a historical building requiring coordinated work efforts to protect the structural integrity of each. As the contaminated material was removed around one particular tower the material was excavated in strips and the cavity was backfilled within the same day with pumpable grout. The deepest excavation was well below the water table, under winter conditions and required all workers to don level B personal protective equipment. Misting stations utilized odor and emission reducing foam extensively. The project required the installation of a retaining wall around the entire perimeter and continual site security measures. In some areas of the site contaminated soil removal was not required and In-Situ soil stabilization activities were performed. Containment walls were constructed to prevent stabilization materials from migrating off site. As the mixture was prepared for use it was then transported to the various site locations for mixing. In phase two a casing was required for installation across a main thoroughfare adjacent to the site and near a major league baseball park. Under heavy traffic constraints complicated by the regular schedule of baseball games, HIS personnel removed the contaminated material and an underground obstruction, placed the casing, backfilled the area and repaved the roadway under budget and ahead of project schedule. Over 4,000,000 gallons of water were pumped and transported off site for treatment.

**Project Manager, Manufactured Gas Plant, City of Terre Haute, Indiana** HIS Constructors, Inc. was selected by the City of Terre Haute, Indiana to perform a MGP site remediation within their city limits. The project included the preparation and



# APPENDIX D: RESUMÉS

implementation of a Storm Water Protection Plan (SWPP). Tree clearing and erosion control were performed to prepare the site for remediation. Over 135,000 tons of impacted soil were excavated and transported to a landfill. It was necessary to demolish numerous underground structures, including stack foundation, tunnels, concrete pads, pits, tanks and piping. Backfilling was performed along with storm water grading and the installation of manholes and RCP piping was also included in the scope of work. In Situ Stabilization (ISS) was performed by a HIS Subcontractor. 6,500 hundred yards of soil was successfully stabilized meeting the engineer's standards. A bituminous trail way will be installed in the spring of 2014.

## **Project Manager, Air Stripping Unit, Lafayette, IN**

Large private engineering client working for INDOT - Lafayette, IN Managed the construction of an air stripping unit, which included the installation of a well, underground piping, and a building. Responsibilities included bid preparation, project schedules, submittals, drawings, deliveries, construction oversight, change orders, punch lists, and billings.

## **Project Manager, Site Demolition, New Orleans, LA**

Responsible for over-seeing demolition activities in preparation of the construction of a large nationally recognized hardware store. Site covered 9 blocks near downtown. Demolition activities included the removal, disposal, and transportation of universal waste, contaminated soil, asbestos, paint waste, and other related material. Other responsibilities included waste profiling, soil investigations, permitting, and utility removal.

## **Project Manager, Impacted Ground Water, Orlando, FL**

On-site groundwater extraction and water treatment operation for a large developer. Contaminated groundwater was unexpectedly

found during the sheet pile installation during construction of a large office building in downtown Orlando. Regulatory agencies immediately stopped the project. Project mobilization and set-up was completed and fully operational within 36 hours in order for construction to continue. Project required treating approximately 20 million gallons of contaminated water using carbon filtration and water stripping technology. Project included overseeing soil sampling, excavation, and monitoring all dump trucks leaving the site with organic vapor analyzers (OVAs).

## **Project Manager, Aluminum Plant, Indiana**

Sold and managed over 75 projects that encompassed industrial maintenance, remediation, emergency response, and engineering related work. Projects included large press and overhead crane decons with PCB contamination, soil remediation, waste water treatment cleaning and maintenance, storm sewer cleaning, epoxy application, emergency clean-ups, extensive PCB equipment decons, wire removal and cleaning of pits up to 110 feet deep, floor block removal, installation and design of water filtration systems, tank removal, tank cleaning, installation of sheet pilings, filter press operation, and water treatment.

## **Project Manager, PCB Soils, Bloomington, IN**

Responsible for overall execution of cleanup of PCB soil excavation and decontamination of creek bed. Approximately one mile of creek sediment was removed. The project required special machinery design in order to prevent cross contamination during the excavation. The project included water treatment, soil solidification, transportation, and disposal.

## **Project Manager, MGP Site, Knoxville, TN**

Project involved remediating soil and bed rock from a former MGP site where a 10.5-million-gallon waste

water storage tank would be constructed. Project consisted of remediating over 43,000 cubic yards of contaminated soil and 21,000 yards of rock. Most of the rock had to be blasted using explosives. The project was located in a busy metropolitan area, next to the 911 call center which made blasting more challenging. A shoring system that would also be used during the tank construction had to be installed around the perimeter of the excavation. Since the job site was located adjacent to a creek, substantial dewatering had to be performed around the clock and the water was treated at the water treatment plant that was constructed on site. Over 27 million gallons of water were treated and discharged.

**Project Manager, Soil Remediation, Binghamton,**

**NY** Soil investigation and remediation clean-up of contaminated soil. The contaminated soil was generated from disposing of waste from an on-site incinerator over several decades. Approximately 17,500 tons of waste was safely remediated and transported from the site.

**Project Manager, Dioxin Decontamination,**

**US Air Force, Biloxi, MS** Designed, proposed, and managed a major dioxin decontamination project. Large and small machinery were required to be decontaminated and sampled from dioxin contamination. Extremely strict health and safety guidelines had been set up and were closely followed. Water treatment was also required.

**Project Manager, MGP Remediation, Lafayette,**

**IN** Removal of coal tar relief holder and related basins and tanks at a former Manufactured Gas Plant (MGP) site for a large utility company. Activities included water treatment, soil excavation, sampling, waste minimization, and demolition. Cyanide contamination was also discovered and handled properly at the project site.





# APPENDIX D: RESUMÉS

## Tom Uher SENIOR PROJECT MANAGER

### EXPERIENCE

- 20 years of project management experience
- 20 years of environmental experience
- 15 years of government contract experience
- 6 years of MGP remediation experience
- 4 years of site safety officer experience

### CERTIFICATIONS / TRAINING

- Course Work in Engineering – Southern Illinois University, Carbondale, IL
- Course Work in Graphic Arts – College of DuPage, Glen Ellyn, IL
- 8 Hour HAZWOPER Supervisor
- 40 Hour OSHA HAZWOPER Training
- 8 Hour Refresher Training
- 10 Hour OSHA Construction Training
- 30 Hour OSHA Construction Training
- Competent Person Training for Excavation and Trenching
- First Aid/ CPR
- Basic Radiation Worker Training, Chem. Nuclear
- DOT HM181 Training

### PROFESSIONAL AFFILIATIONS

- Local School District PTA
- Dads of Great Students Community Organization

### EMPLOYMENT HISTORY

**HIS Constructors, Inc.,** *Indianapolis, Indiana*  
Senior Project Manager  
January 2016 - Present

**Cleans Harbors Environmental Services, LLC**  
*Chicago, Illinois*  
Project Manager  
2014 - 2015

**Terra Contracting, LLC,** *Kalamazoo, Michigan*  
Project Manager  
2013 - 2014

### KEY PROJECTS

**Project Manager, Remediation, Various**

**Locations Managed.** Contract amount \$1.2MM demolition and removals of both hazardous and non-hazardous materials under DEQ/DEP guidelines and oversight. Materials removed were from former chemical storage facilities.

**Project Manager, In-Situ Railroad Project, Eunice, LA.** Contract amount \$4.0MM In-Situ and Ex-Situ stabilization of soils contaminated with Dichloropropane (DCP). 11,300 cubic yards of soil were treated with 6% Zero Valiant Iron (ZVI) in bentonite slurry with a 10-foot diameter auger to a max depth of 45 feet. One Manitowoc 777 Lattice Boom Crane Equipped with Hane Drill Platform (750,000 Ft. Lb. drilling force) was used. 8,200 tons of soil were ex-situ (PUG-MILL) treated at the 6% ZVI add mixture as well.

**Project Manager, Demolition, Racine, WI.** Contract amount \$2.3MM – decontamination, dismantling, equipment rigout, and demolition of 10 plant buildings and corresponding tank farms with a major challenging component of removing lines, tanks, vessels and supporting structures next to active acrylic and methacrylic acid lines.

**Project Manager, Palmieri Property, Monaca, PA.** Contract amount \$3.0 MM 60,000-ton waste glass excavation with material processing through screen crusher and PUG-MILL stabilization, then placement, compaction, capping and restoration of the eight-acre site.

**Project Manager, Confidential Client In-Situ Soil Stabilization Midwest.** Contract amount \$4.0MM. – In-Situ Soils Stabilization (ISS) of 32,000 cubic yards of Coal Tar Contaminated Materials with grout mix of ground granular blast furnace slag (GGBFS) and water utilizing a 9-foot-diameter auger. Max drilling depth of 35 feet. One Manitowoc 4001 Lattice Boom Crane Equipped with Hane Drill Platform (750,000 Ft. Lb. drilling force) was used.



# Brian Pickering

## GENERAL SUPERINTENDENT

### EXPERIENCE

- 30 years of project management experience
- 30 years of bridge building experience
- 30 years of concrete structure experience

### CERTIFICATIONS / TRAINING

- 8 Hour HAZWOPER Supervisor
- 40 Hour OSHA HAZWOPER Training
- 8 Hour Refresher Training
- 10 Hour OSHA Construction Training
- 30 Hour OSHA Construction Training
- Competent Person Training for Excavation and Trenching
- Certified Crane Rigger and Signaler
- First Aid/ CPR
- ATSSA Traffic Control Supervisor Training
- ATSSA Traffic Control Technician Training

### EMPLOYMENT HISTORY

#### **HIS Constructors, Inc.**, *Indianapolis, Indiana*

General Superintendent  
January 1, 2016 - Present

Superintendent

December 2008 - December 2015

Duties: Supervised safety and construction of road and bridge work in Indiana involving cofferdam construction, pile driving, formwork for footings, pier and cap construction, drilled shafts, shoring, erosion control, concrete beam and steel placement, deck placement and the hiring of foreman and crew members and scheduling of job site construction activities.

#### **Erber and Milligan Construction**

*Charlestown, Indiana*

Superintendent

September 1992 - November 2008

Duties: Supervised safety and construction of bridge work in Indiana which included: box culverts, covered bridges, modified latex overlays, and new bridge construction.

#### **E.H. Hughes Construction**, *Jeffersonville, Indiana*

Foreman

January 1989 - August 1992

Duties: Supervised safety, managed labor and equipment, and coordinated subcontractors for bridge work on large interstate projects.

### KEY PROJECTS

- New bridge construction over Little Raccoon Creek in Parke County, Indiana
- Construction of new 1.7-mile road and new 400 ft. bridge in Fairland, Indiana
- Construction of two new bridges and MSE wall in Lafayette, Indiana
- Bridge widening on State Road 25 in Lafayette, Indiana
- Wetlands construction in Hancock County, Indiana
- Steel pedestrian bridge and retaining wall construction in Kokomo, IN
- Two new box beam bridges over State Roads 58 and 62 over Eagle Creek in Boone County, Indiana
- Poly overlay over I-65 and Southport Road in Greenwood, Indiana



# APPENDIX D: RESUMÉS

## Greg Poore GENERAL SUPERINTENDENT

### EXPERIENCE

- 38 years of project management experience
- 38 years of excavation experience
- 38 years of site development experience for commercial and residential clients

### CERTIFICATIONS / TRAINING

- 40 Hour OSHA HAZWOPER Training
- 8 Hour HAZWOPER Supervisor
- 8 Hour Refresher Training
- 10 Hour OSHA Construction Training
- Competent Person Training for Excavation and Trenching
- CPR/ First Aid

### EMPLOYMENT HISTORY

**HIS Constructors, Inc., Indianapolis, Indiana**  
General Superintendent: Excavation/Environmental  
January 2015 - Present

**C & P Dirt Works, LLC**  
Owner  
April 2013 - January 2015

**Maxim Crane Work, LP**  
General Superintendent / Operations Manager  
April 2000 - January 2013

**Carlisle Crane & Excavation**  
Field Superintendent  
May 1988 - April 2000

### KEY PROJECTS

**Camp Ernst Road for Kentucky State Transportation Department** Negotiated and secured a borrow site for 175,000 cubic yards of fill dirt to balance job site, saving ATS Construction several hundred thousand dollars. Self-performed trucking for project.

**General Superintendent/Operations Manager, Newport Shopping Center of Newport, KY**  
650,000 cubic yards of cut/fill.

**General Superintendent/Operations Manager, Great American Ballpark of Cincinnati, OH**  
80,000 cubic yards undercut/refill, 75,000 cubic yards of export.

**General Superintendent/Operations Manager, US Highway 27 of Alexandria, KY** 1.1M cubic yards cut/fill.

**General Superintendent/Operations Manager, Argosy Casino of Lawrenceburg, IN** 250,000 cubic yards of cut/fill and lime stabilization.

**Field Superintendent, Grand Victoria Casino, Rising Sun, IN** Excavated 120,000 cubic yards from the banks of the Ohio River to create a slip for Riverboat Casino. Contract amount was \$1.2M.

**Field Superintendent, Paul Brown Stadium, Cincinnati, OH** Job consisted of 9 city blocks of surface demo, 10,000 cubic yards of cut/fill and 60,000 cubic yards of export.